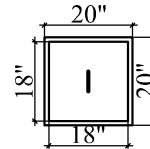
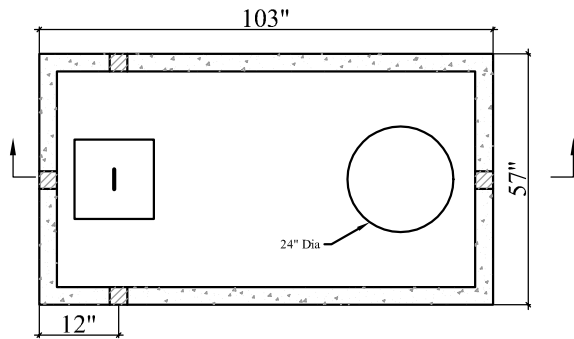


SECTION A-A

KEYWAY DETAIL



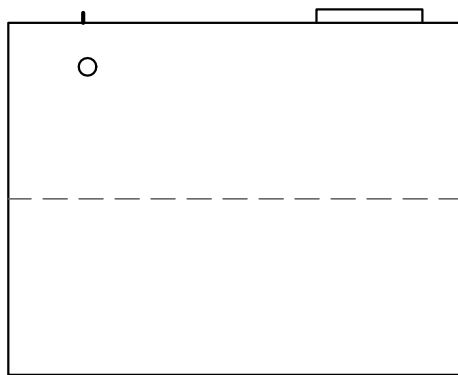
TYPICAL LID



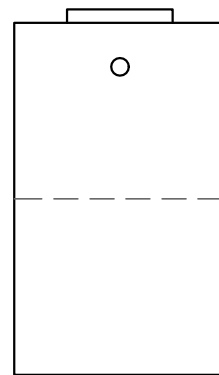
PLAN VIEW

NOTES:

1. CONCRETE STRENGTH = MIN. 4500 PSI
2. STRUCTURAL FIBER REINFORCEMENT
3. "POLYLOK" PIPE SEALS CAST IN TANK INLET
4. MASTIC SEALANT IN TANK JOINT
5. 3" WALL THICKNESS
6. MANHOLE PLASTIC HANDLES
7. OUTLET 2" RUBBER BOOT (POLYLOK-PIPE SEAL)



FRONT VIEW



SIDE VIEW

APPROX. WEIGHT:

TOP = 4540 lb
 BOTTOM = 4640 lb
 TOTAL = 9180 lb

GAL. PER IN = 21
 ACTUAL GAL. TO OUTLET = 1156
 FULL CAPACITY = 1328

LAKESIDE PRECAST

ABINGDON, VIRGINIA

PH: 276-628-2472

1000 Gal. MS PumpTank

Date
 July 30, 2020

Scale
 Not To Scale

Sheet
 1