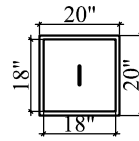
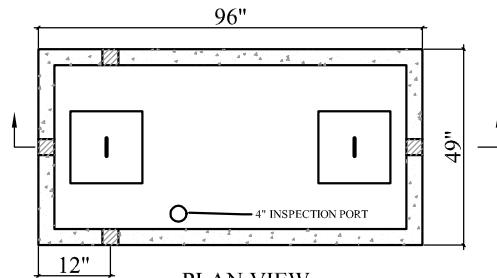


SECTION A-A



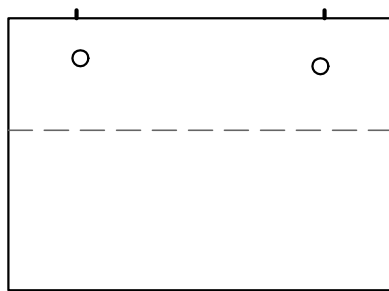
TYPICAL LID



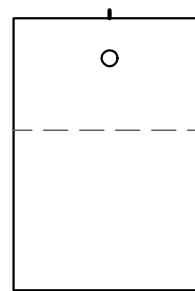
PLAN VIEW

NOTES:

1. CONCRETE STRENGTH = MIN. 4500 PSI
2. STRUCTURAL FIBER REINFORCEMENT
3. "POLYLOK" PIPE SEALS CAST IN TANK INLET
4. MASTIC SEALANT IN TANK JOINT
5. 2 1/2" WALL THICKNESS
6. MANHOLE PLASTIC HANDLES
7. OUTLET "Y" RUBBER BOOT (POLYLOK-PIPE SEAL)



FRONT VIEW



SIDE VIEW

APPROX. WEIGHT:

TOP = 2820 lb
 BOTTOM = 2820 lb
 TOTAL = 5640 lb

GAL. PER IN = 17.3
 ACTUAL GAL. TO OUTLET = 816
 FULL CAPACITY = 988

LAKESIDE PRECAST

ABINGDON, VIRGINIA

PH: 276-628-2472

750 Gal. MS Tank

Date
 APR. 15, 2020

Scale
 Not To Scale

Sheet
 1